

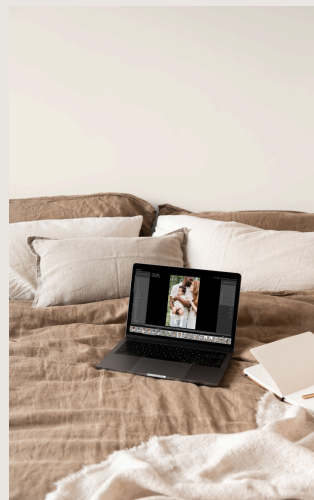
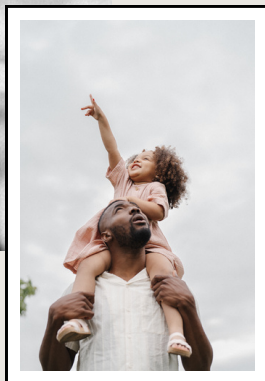
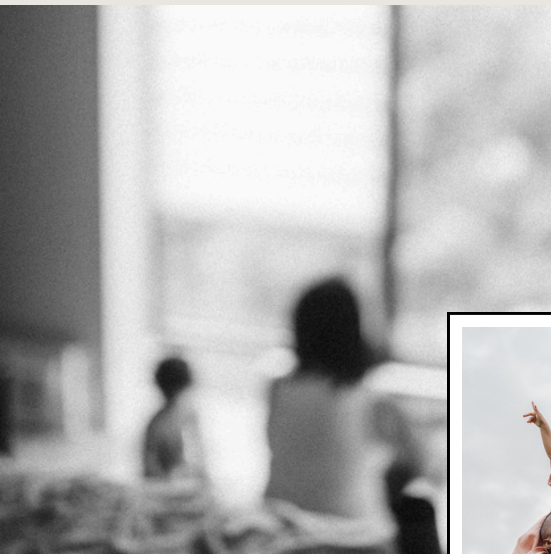


CAROLINA HANNA

PHOTOGRAPHY

# LIGHTROOM SHORTCUTS

*cheat sheet*



## 1. NAVIGATION & WORKFLOW

**G:** Grid view (Library mode)  
**D:** Develop mode  
**Tab:** Hide/Show side panels  
**Shift + Tab:** Hide/Show all panels  
**L:** Lights out mode (dim everything around the photo)  
**F:** Full-screen preview  
**Ctrl/Cmd + Z:** Undo  
**T:** Show/Hide Toolbar

## 2. CROPPING + ORIENTATION

**R:** Crop tool  
**X:** Change crop orientation (switch between landscape and portrait) - *\*crop tool should be active*  
**O:** Toggle crop overlay guides (rule of thirds, golden spiral, etc.) - *\*crop tool should be active*  
**Shift + O:** Rotate overlay orientation

## 3. ADJUSTMENTS

**K:** Adjustment brush  
**M:** Graduated filter  
**Shift + M:** Radial filter  
**[ and ]:** Adjust brush size  
**Shift + [ or ]:** Adjust brush feathering  
**Q:** Removal tool  
**Shift+T:** Toggle between modes in the removal tool  
**W:** Adjust White Balance

## 4. FILE MANAGEMENT

**Ctrl/Cmd + Shift + E:** Export  
**Ctrl/Cmd + R:** Show folder in Finder/Explorer  
**Ctrl/Cmd + E:** Open photo in Photoshop or external editor  
**Ctrl/Cmd + ' (apostrophe):** Create a virtual copy  
**Ctrl/Cmd + Shift + R:** Reset all settings on an image (you can even select multiple images and reset them all!)

## 5. COPY & SYNC EDITS

**Ctrl/Cmd + C:** Copy settings  
**Ctrl/Cmd + V:** Paste settings  
**Ctrl/Cmd + Shift + S:** Synchronize settings across multiple images

## 6. QUICK BEFORE/AFTER

**\ (Backslash):** Show before/after comparison - *Works in Develop mode*  
**Y:** Split-screen before/after  
**Shift + Y:** Toggle view before/after

[@CAROLINA\\_HANNA\\_EDUCATION](#)

Shortcuts are like learning a new language - they might feel a little tricky at first, but with time, they'll become second nature.

💡 **Here's a tip: Print this guide and tape it near your computer or workspace. It's a handy reference until you've got them memorized!**

The more you practice, the faster you'll breeze through your Lightroom workflow—and the more time you'll have for the things you love (like shooting, editing creatively, or just relaxing!).

Happy editing!

*Carolina, x*

# NORTH

## *Presets & Brushes*

Say hello to The North Collection – a cozy, modern preset pack designed to make your photos warm and inviting. These presets are super versatile, working beautifully for both indoor and outdoor shots, and they're as easy to use as they are stunning.

I've tested them across all the major camera models to make sure they deliver gorgeous results every time. With just a few clicks, you'll see your photos transform into glowing, contemporary masterpieces.

Whether you're a pro or just love capturing life's moments, The North Collection will bring your images to life effortlessly!

GET NORTH



CAROLINA  
HANNA

PHOTOGRAPHY



[@carolina\\_hanna\\_education](#)  
[@carolina\\_hanna\\_photography](#)

[WWW.CAROLINAHANNAEDUCATION.COM](http://WWW.CAROLINAHANNAEDUCATION.COM)

[WWW.CAROLINAHANNA.COM](http://WWW.CAROLINAHANNA.COM)

